

MOR Structured PTFE Sheet

MOR Structured PTFE Sheets are multidirectional oriented fibre structures with filler substances.

Cold flow & Creep is eliminated.

Higher temperature/pressure combinations possible.

Ease to handle and install.

High compressibility at low pressure and outstanding recovery.

High mechanical strength, chemical resistance and sealability.

Sheet Size : 1500mm x 1500mm

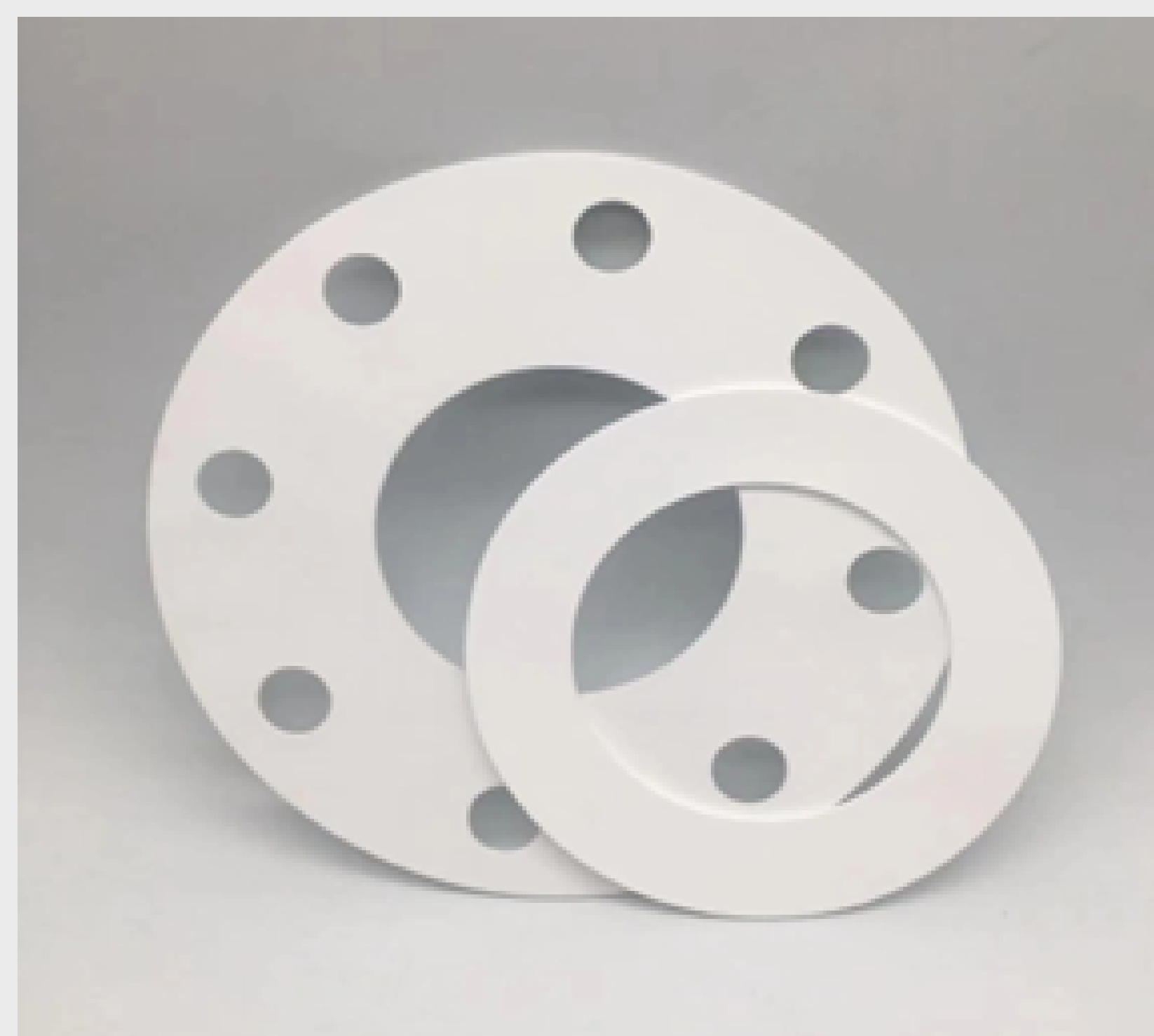
Thickness : 1.5mm , 2.0mm & 3.0mm

Structured PTFE filled with Silica

- Color : Fawn
- Density : 2.1g/m³
- Temperature : -210°C to 260°C
- Pressure : up to 83 bar
- pH : 0 - 14

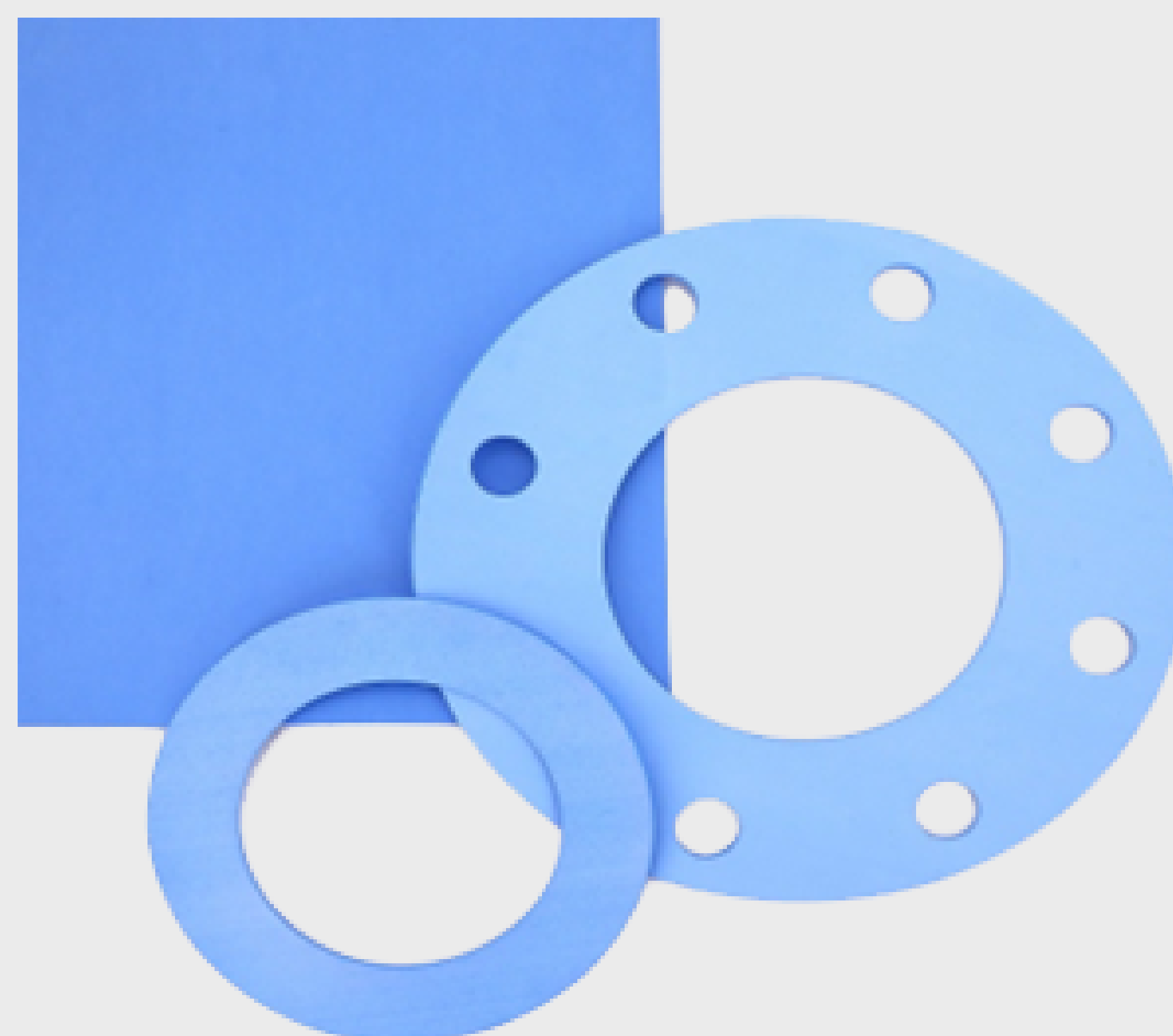
Structured PTFE with Barium Sulfate

- Color : Off-white
- Density : 2.9g/m³
- Temperature : -210°C to 260°C, Pressure : up to 83 bar
- pH : 0 - 14



**Structured PTFE with
Hollow Glass Microspheres**

- Color : Blue
- Density : 1.7g/m³
- Temperature : -210°C to 260°C, Pressure : up to 55 bar
- pH : 0 - 14



**Structured PTFE with
Hollow Glass Microspheres**

- Color : White
- Density : 1.1g/m³
- Temperature : -210°C to 260°C
- Pressure : up to 55 bar
- pH : 0 - 14

